

## 15 Clifton Perry Memorial Reef

Construction date: January to May 2005

Monitoring Date: June 24, 2007

Location: Donaldson permitted reef site

GPS coordinates: N27° 13.339 / W80° 06.131

### 15.1 History of the Clifton S. Perry Memorial Reef

In the winter of 2005 nine barge loads of concrete and steel materials were deployed on the Clifton S. Perry Memorial Reef in 67 feet of water within the Donaldson permitted artificial reef site in Martin County, Florida. These materials came from the decommissioned Frank Wacha draw bridge that spanned the Indian River Lagoon in Jensen Beach. The new reef was named in honor of one of the original founders of the Florida Oceanographic Society (FOS) in the early 1960's. FOS was the first non-profit environmental group in the area and Mr. Perry's early efforts in the Society helped establish the original artificial reef deployments offshore Martin County.

### 15.2 Clifton Perry Memorial Reef Orientation

Figure 40 shows a chart with the location of the Perry reef in the northeastern area of the Donaldson Reef Site. The reef lies in an elliptical array from east-southeast to west-northwest. The overall footprint gathered from GPS data is 330 feet by 280 feet which is approximately 2 acres. The location of the PCL Shallow Reef deployed in 2006 is shown to the SE of the Perry Reef. Figure 41 shows representative photographs of the Perry Memorial Reef.

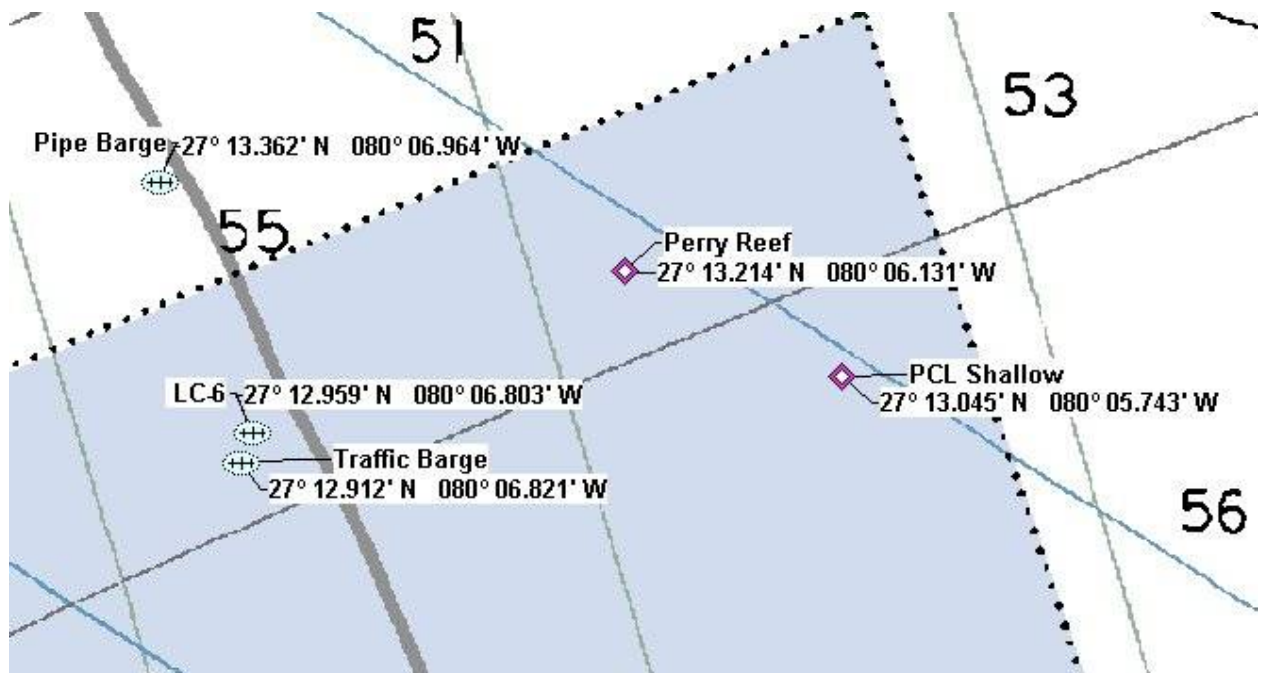


Figure 40. Chart showing Locations of Perry and PCL Shallow Reefs



**Figure 41. Photographs of the Perry Memorial Reef**

### **15.3 Reef Components Stability**

The highest reef profile is 20 feet at a spot with material stacking and a large concrete pile sticking up at a steep angle from the seafloor. The top of the reef at this location was at a depth of 40 feet in 2005 in 67 feet of seafloor depth. In 2006 and 2007 that same spot was at a depth of 47 feet. The average profile is approximately 15 feet above the seafloor at other areas of stacked materials. There has been settlement of some of the reef units, with a change in maximum reef height of seven feet (from 27 to 20 feet). The overall size of the reef appears to be the same as when deployed.

## 15.4 Fish Species and Abundance Findings:

Table 26 presents the fish species observed and documented during monitoring on April 3, 2006 and June 24, 2007.

**Table 26. Clifton Perry Memorial Reef Fish Census**

Common Name	Scientific Name	Adult or Juvenile	2007	2006
Almaco Jack	<i>Seriola rivoliana</i>	A		M
Atlantic spadefish	<i>Chaetodipterus faber</i>	A	M	
Baracuda	<i>Sphyraena barracuda</i>	A		M
Beau Gregory	<i>Stegastes leucostictus</i>	J&A	M	F
Belted Sandfish	<i>Serranus subligarius</i>	A		F
Bicolor damselfish	<i>Stegastes partitus</i>	J	M	
Black Margate	<i>Anisotremus surinamensis</i>	J&A	M	M
Black seabass	<i>Centropristis striata</i>	J&A		M
Blue runner	<i>Caranx crysos</i>	J&A	M	A
Common Snook	<i>Centropomus undecimalis</i>	A	A	M
Doctorfish	<i>Acanthurus chirurgus</i>	A		F
Fry	<i>Jenkinsia lamprotaenia</i>	J		A
Gag Grouper	<i>Mycteroperca microlepis</i>	A		F
Goliath grouper	<i>Epinephelus itajara</i>	A		M
Gray snapper	<i>Lutjanus griseus</i>	J&A	M	
Lane Snapper	<i>Lutjanus synagris</i>	J&A	M	S
Pigfish	<i>Orthopristis chrysoptera</i>	A	A	
Porkfish	<i>Anisotremus virginicus</i>	J&A	M	M
Puddingwife	<i>Halichoeres radiatus</i>	A		F
Round Scad (Cigar Minnows)	<i>Decapterus punctatus</i>	A	A	A
Sargent Major	<i>Abudefduf saxatilis</i>	A		S
Sheepshead	<i>Archosargus probatocephalus</i>	J&A	M	A
Sheepshead porgy	<i>Calamus penna</i>	A	F	F
Silversides (baitfish)	<i>Atherinidae</i>	A	M	
Southern sennet	<i>Sphyraena picudilla</i>	A	M	
Spotfin Butterflyfish	<i>Chaetodon ocellatus</i>	A		S
Striped Croaker	<i>Bairdiella sanctaeluciae</i>	A	M	
Tomtate	<i>Haemulon aurolineatum</i>	J&A	M	M
Yellowtail Reeffish	<i>Chromis enchrysur</i>	J	M	
	<b>Total Number of Species:</b>		18	21